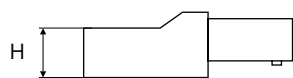
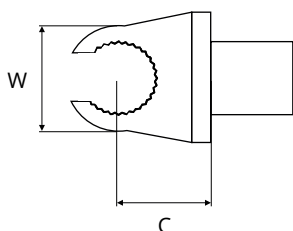
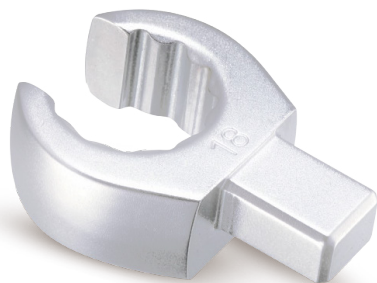


Inserto Poligonale Aperto

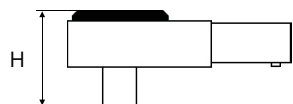
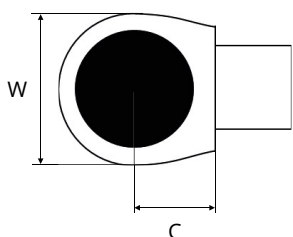


Codice	Dimensione	Larghezza	Altezza	Dal Centro al Bordo C	Peso	Inserto
		W	H			
		mm	mm	mm	g	mm
197 17 0126 197 17 9126	10	21.2	12	17.5	57	9 x 12
197 17 0127 197 17 9127	11	22.6	12	17.5	55	9 x 12
197 17 0128 197 17 9128	12	24.1	12	17.5	59	9 x 12
197 17 0129 197 17 9129	13	25.2	12	17.5	55	9 x 12
197 17 0130 197 17 9130	14	27.3	13	17.5	60	9 x 12
197 17 0131 197 17 9131	16	30.1	13	17.5	65	9 x 12
197 17 0132 197 17 9132	17	31.6	13	17.5	64	9 x 12
197 17 0133 197 17 9133	18	33.3	15	17.5	74	9 x 12
197 17 0134 197 17 9134	19	34.6	15	17.5	80	9 x 12
197 17 0135 197 17 9135	21	37.7	15	17.5	88	9 x 12
197 17 0136 197 17 9136	22	39.3	15	17.5	92	9 x 12

197 17 0*** = standard

197 17 9*** = con chip di riconoscimento

Inserto a Cricco Reversibile



Codice	Denti	Larghezza	Altezza	Dal Centro al Bordo C	Peso	Inserto	Attacco
		W	H				
		mm	mm	mm	g	mm	
197 17 0201 197 17 9201	52	25	23	17.5	69	9 x 12	1/4"
197 17 0202 197 17 9202	52	34	33	17.5	143	9 x 12	3/8"
197 17 0203 197 17 9203	52	34	38	17.5	154	9 x 12	1/2"
197 17 0205 197 17 9205	52	41	43	25	300	14 x 18	1/2"
197 17 0206 197 17 9206	52	41	51	25	338	14 x 18	3/4"
197 17 0007	36	70	60	75	1685	Ø 20	3/4"
197 17 0008 197 17 9208	36	70	60	152	2500	Ø 30	1"

197 17 0*** = standard

197 17 9*** = con chip di riconoscimento