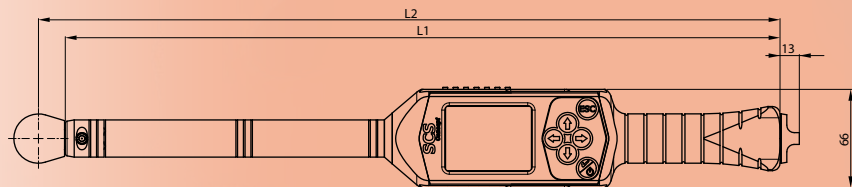


Technical data

General data	Options
<p>Measurement accuracy: ±0,5% deviation between 20% and 100% of the torque capacity ±1% deviation between 10% and 20% of the torque capacity ±0,1° display deviation of the angle</p> <p>Performance: 1GB Memory, 20.000 values - 20.000 curves - 1.000 parameter-sets, CPU 80Mips, 32-Bit processor</p> <p>Display: HiRes 2,3" Touch-screen, Resolution: 320 x 240 pixel, 65535 colours</p> <p>Power supply: Li-Io battery (changeable) 3,6 V-2700 mAh, 9 hrs. duration</p>	<p>Barcode scanner</p> <p>Ext. charger single</p> <p>Ext. charger double</p> <p>Freedom³ explorer software</p> <p>SQnet+ software</p>



Modell Freedom SPC/PRW	Capacity Nm	Drive mm	L1 mm	L2 mm	Weight* Kg
Freedom ³ 15	15	9 x 12 female	375	+18	0,8
Freedom ³ 30	30	9 x 12 female	375	+18	0,86
Freedom ³ 70	70	9 x 12 female	480	498	0,93
Freedom ³ 100	100	9 x 12 female	480	498	0,93
Freedom ³ 200	200	14 x 18 female	604	629	1,5
Freedom ³ 300	300	14 x 18 female	754	779	1,86
Freedom ³ 400	400	14 x 18 female	754	779	1,86
Freedom ³ 600	600	14 x 18 female	1032	1057	3,65
Freedom ³ 800	800	Ø 20 male	1250	1330	5,1
Freedom ³ 1000	1000	Ø 20 male	1520	1610	6,25
Freedom ³ 1200	1200	Ø 28 sa female	1530	1732	7

* without ratchet

Discover simplicity



SCS Concept Group SAS
6 rue Gaston Prétôt
Parc d'Activités des Courts Cantons
25200 MONTBELIARD- France
info@scsconcept.eu - www.scsconcept.eu



Q-direct GmbH
Zeppelinstr. 2 - 84180 Loiching - Kronwieden - (Germany)
info@q-direct.eu - www.q-direct.eu

Your local distributor



Advanced Tightening Solutions for Quality Control & Production

Discover simplicity



Freedom³

One wrench, more functions

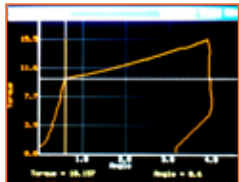


Freedom³ LAB - SPC

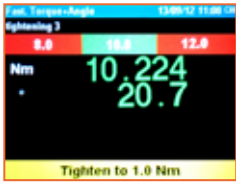
The NEW function for the automatically detection of the breakaway torque

Freedom³- LAB mode

Freedom³ LAB is a torque & angle wrench designed to be programmed locally by Touch-screen and keyboard. For every Quality Control test, or for every tightening program, Freedom³ LAB saves test results and curves.



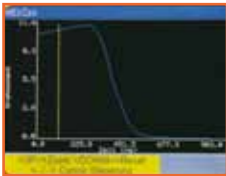
- Quality Control**
- Smart Breakaway
 - Breakaway Peak
 - Breakaway Angle
 - Open\Close
 - Minimum Torque
 - Loose Torque



- Tightening Strategies**
- Fast Torque Driven
 - Fast Torque\Angle
 - Fast Yield
 - Fast Yield\Angle

Freedom³- SPC mode

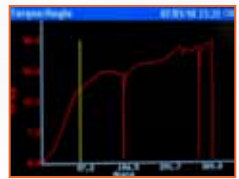
The Freedom³ SPC is a torque & angle wrench designed to work receiving routes (list of Quality Control and main tightening programs) from management software (SQnet+ /QSTorque)



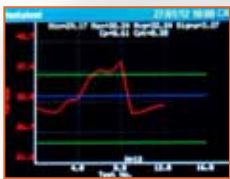
- Curve and Statistic on Freedom³**
- Torque\Time curve
 - Torque\Angle curve
 - Curves analysis directly on the wrench
 - Zoom function directly on the wrench
 - Sample Charts
 - Statistical evaluation management of XR Charts and trend control



- Quality Control**
- Smart Breakaway
 - Breakaway Peak
 - Breakaway Angle
 - Open\Close
 - Minimum Torque
 - Loose Torque
 - Sequential work out horizontal and vertical
 - Digital sign
 - Error codes



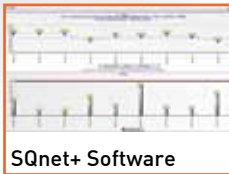
- Joint analysis**
- Allows to analyze the behaviour of the joint, in order to find the best tightening strategy



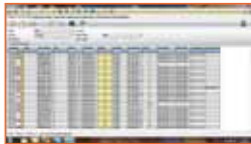
- Curves and Statistic**
- Torque\Time curve
 - Torque\Time curve
 - Curves analysis directly on the wrench
 - Zoom function directly on the wrench
 - Sample charts



- Pictures and info**
- Freedom³ can show the pictures of the bolts where the user has to tighten or taken control test



- SQnet Software**
- SQnet+ is a software for programming Freedom³ SPC.
 - SQnet+ manages tools, locations, operations and quality control
 - Interface with QSTorque and other management software available



Programming on board
In the LAB version, Freedom³ is programmed directly on board from the user. It is not necessary to connect the wrench to the pc.

Quality tests or tightening strategies
Once Freedom³ is programmed, the user can start to run the tests. Thanks to the LEDS and vibration functionality, the user is advised when the target is reached.

Download data to F³ Explorer software
Freedom³ LAB can store 20000 results, 20000 curves, 10000 programs. F³ Explorer allows to collect data and curves from SCS instruments, export to Excel, shows multi-curves and graphics.

Programming by SQnet+
With SQnet+ it is possible to send routes of programs or jobs. Once Freedom³ is uploaded, the wrench is ready to work.

Working with Freedom³
User can select the test to run or he must follow a precise sequence. After every single test, Freedom³ shows their status (green points for OK test, red points for not OK test)

Download data to SQnet+
When the route test is completed, the user can download data to SQnet+ by USB port (it is possible to download data to SQnet+ also if the route is not completed).

SQnet+ Software
SQnet+ manages tools, operations locations and quality control of production lines. On SQnet+ it is possible to analyze statistic and curves received from Freedom³ SPC

Options and accessories



Quick interchangeable battery



Rubber protection



LED indicator



USB port



External battery charger (single/double)



Freedom³ Explorer software



Buzzer and vibration alarm



Barcode scanner



Rubber protection



LED indicator



USB port



External battery charger (single/double)



SQnet Software



Upload \ Download route data via Wi-Fi